

Chapter 9

CHASSIS DRAWINGS

1. CAB DRAWINGS
2. CAB BACK DRAWINGS
3. CHASSIS DRAWINGS
4. CHASSIS FRAME DRAWINGS
5. REFERENCE FIGURE FOR SUSPENSION

ABOUT CAD-DATA

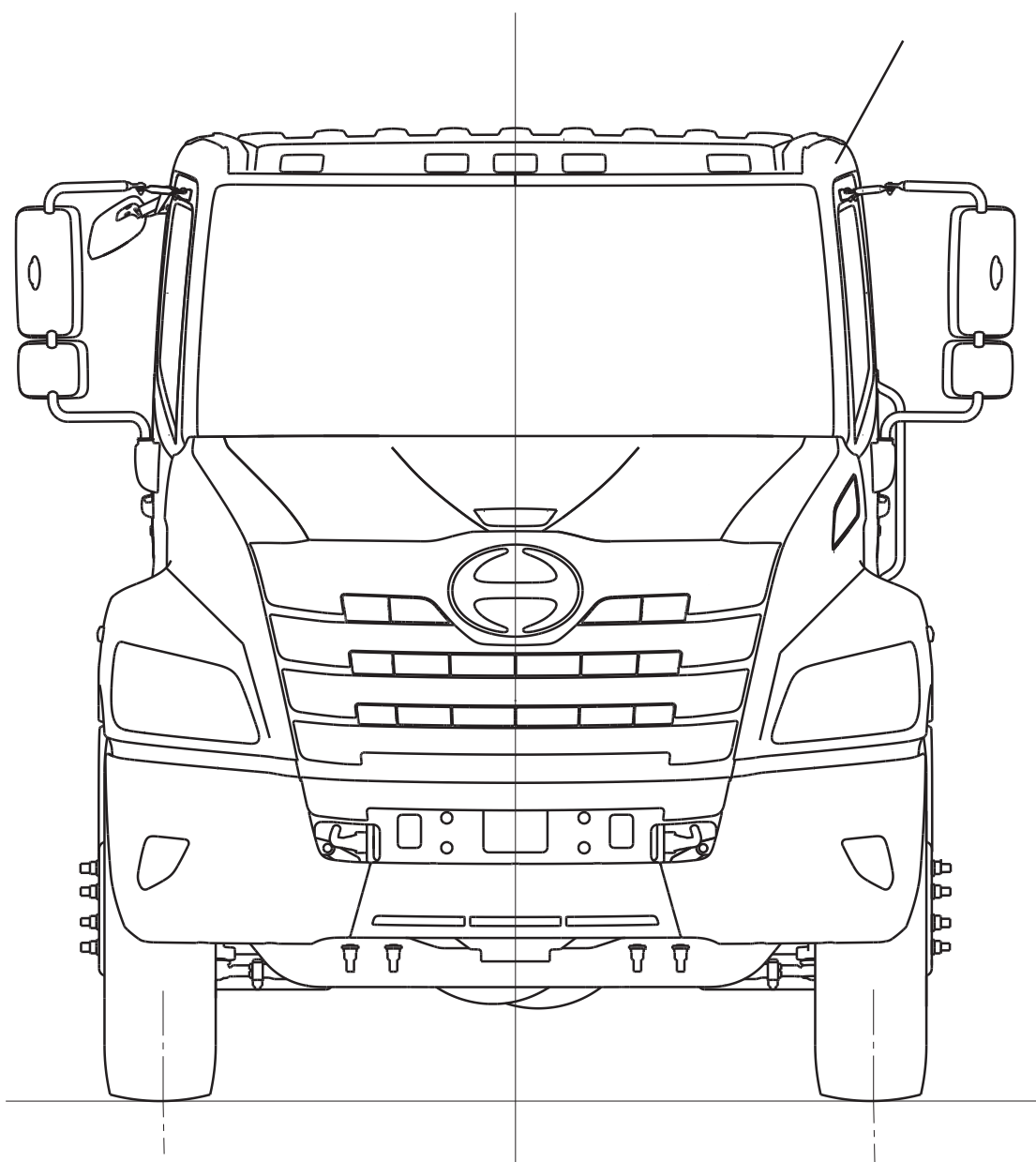
CAD-DATA is contained on separate attachment file in this CD-ROM.

CONTENTS ; CHASSIS DRAWING

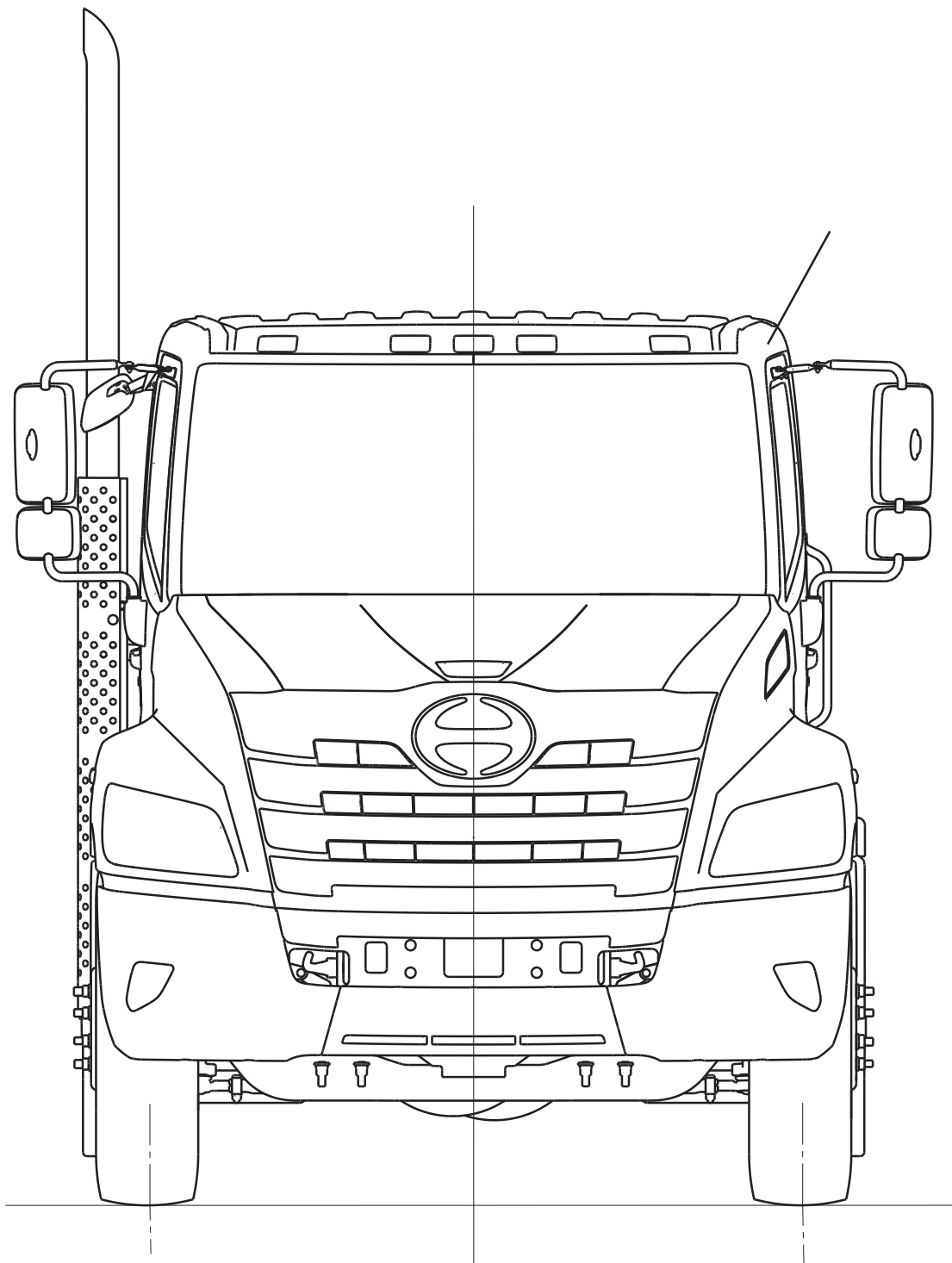
1. CAB DRAWINGS

MODEL : ALL

- FRONT SIDE VIEW
(SHORT TAIL)



- FRONT SIDE VIEW
(VERTICAL STACK TAIL)
< Day Cab ONLY >



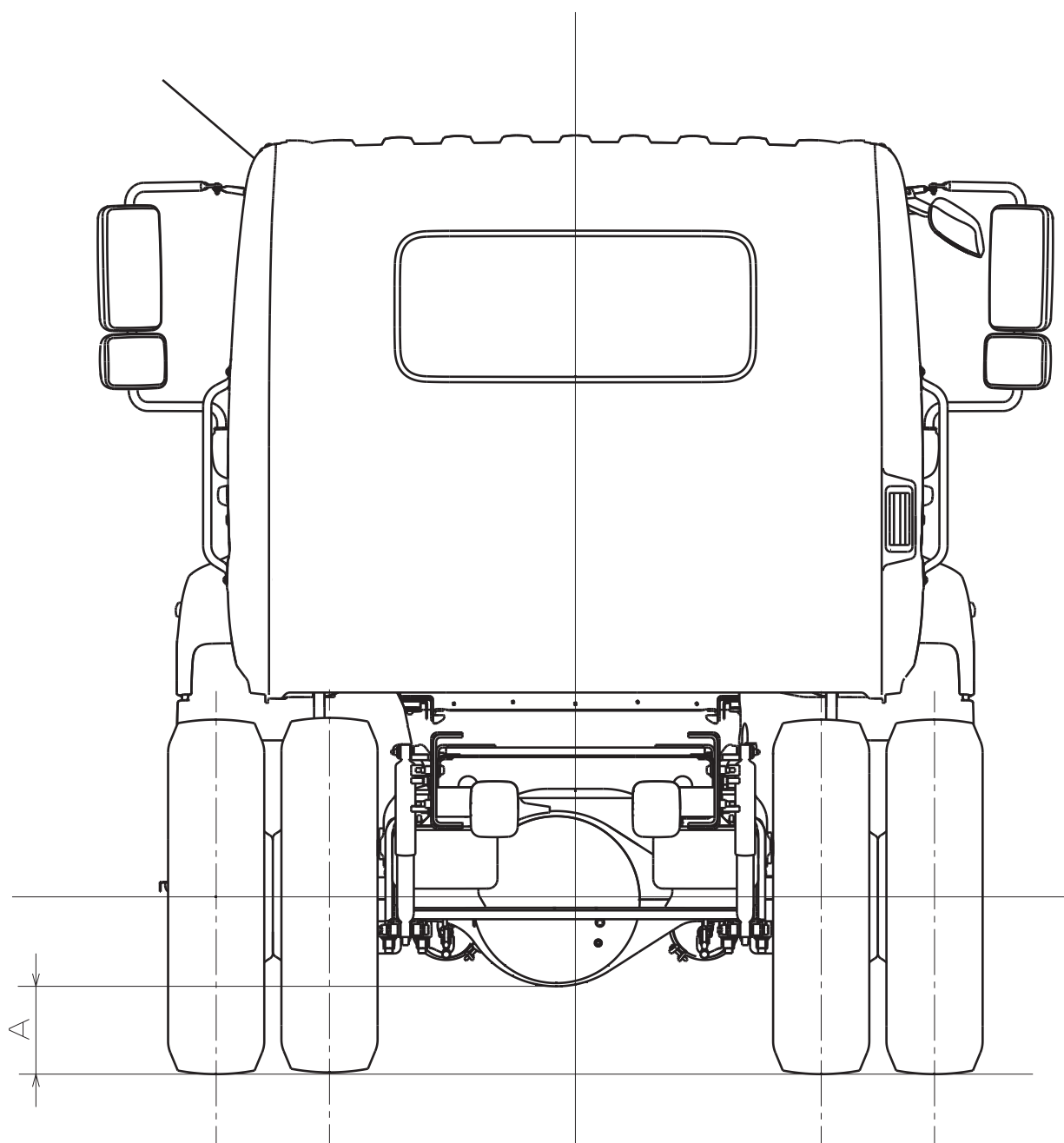
MODEL : NHC2

- REAR SIDE VIEW
(REAR AIR SUSPENSION)

4X2 - AIR

Unit : mm (in.)

MODEL	RR AXLE	TIRE	A
XL7, XL8 (NHC2)	S23-172	11R22.5-14	220 (8.7)
		11R22.5-16	
		295/75R22.5-14	208 (8.2)
		295/75R22.5-16	
		12R22.5-16	235 (9.3)



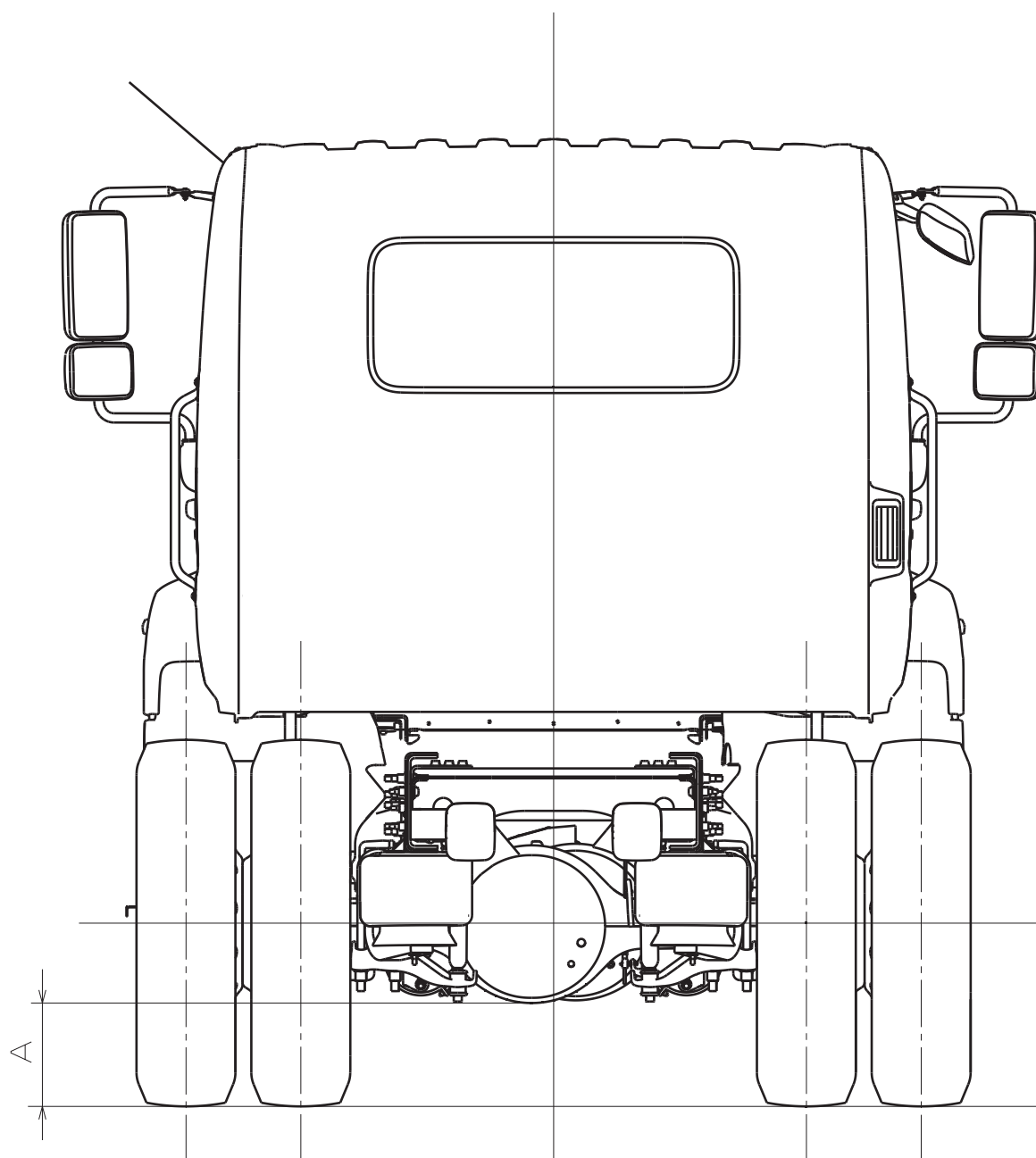
MODEL : NMC2

- REAR SIDE VIEW
(REAR AIR SUSPENSION)

6X4 - AIR

Unit : mm (in.)

MODEL	RR AXLE	TIRE	A
XL8 (NMC2)	D46-172 (R1) R46-172 (R2)	11R22.5-14	225 (8.9)
		11R22.5-16	
		295/75R22.5-16	213 (8.4)
XL8 (NMC2)	DSH40 (R1) RSH40 (R2)	11R22.5-14	261 (10.3)
		11R22.5-16	
		295/75R22.5-16	250 (9.8)
	DSH40 (R1) RSH40 (R2)	11R22.5-14	261 (10.3)
		11R22.5-16	
		295/75R22.5-16	250 (9.8)



2. CAB BACK DRAWINGS

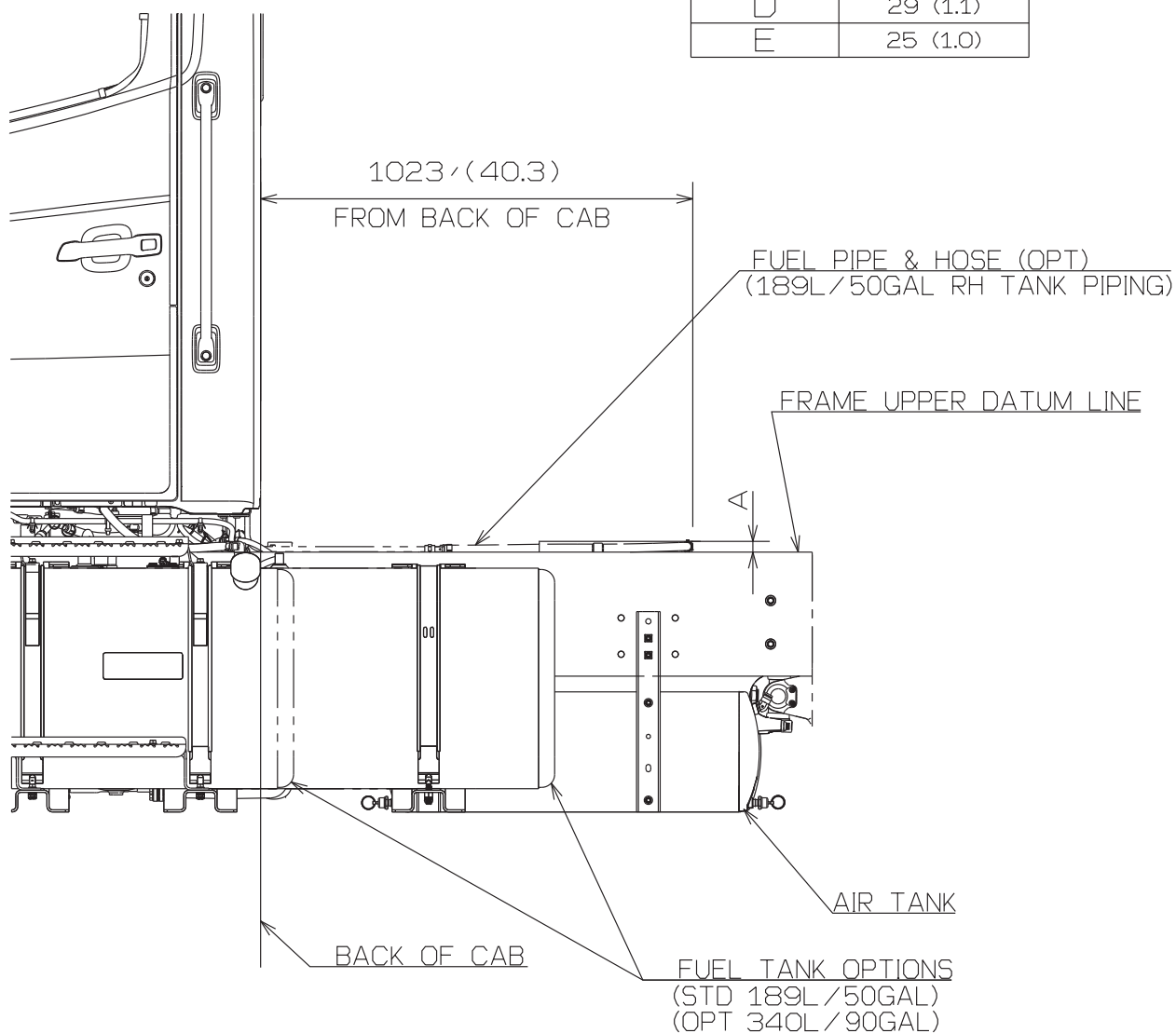
MODEL : NHC2 < Day Cab >
NMC2 < Day Cab >

Unit : mm (in.)

• LEFT SIDE VIEW

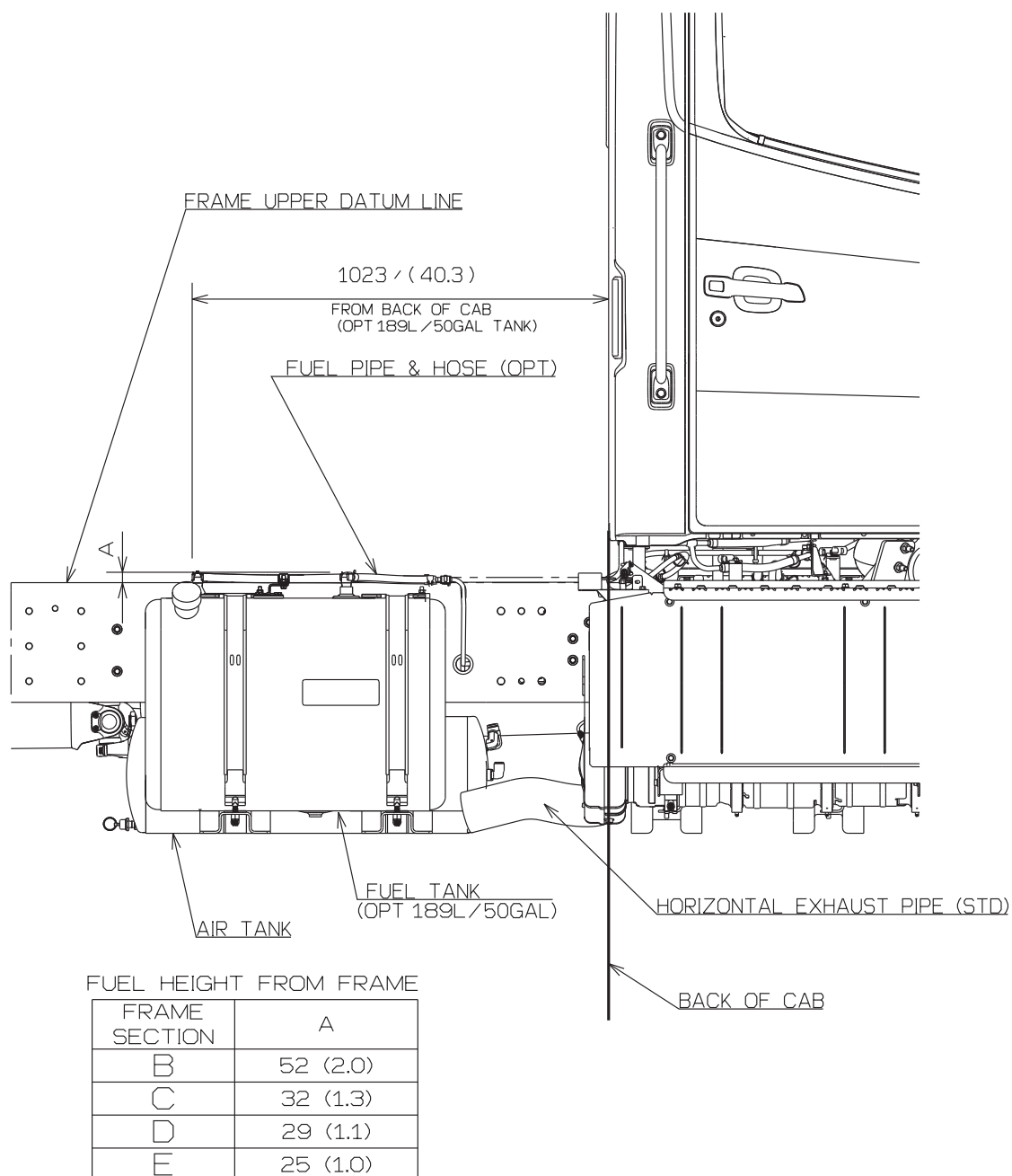
FUEL HEIGHT FROM FRAME

FRAME SECTION	A
B	52 (2.0)
C	32 (1.3)
D	29 (1.1)
E	25 (1.0)



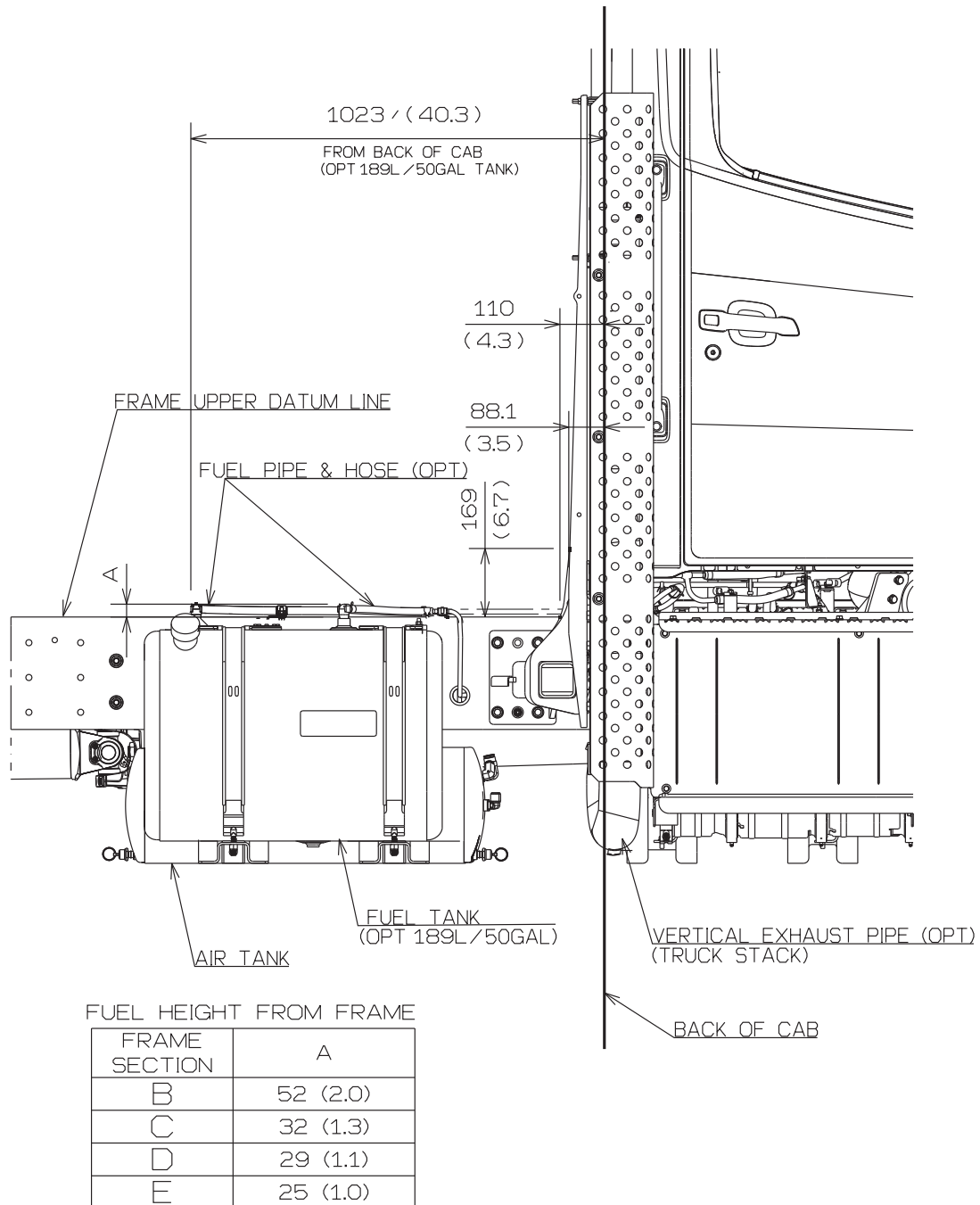
• RIGHT SIDE VIEW
(SHORT TAIL)

Unit : mm (in.)



- RIGHT SIDE VIEW
(VERTICAL STACK TAIL - TRUCK)
< Day Cab ONLY >

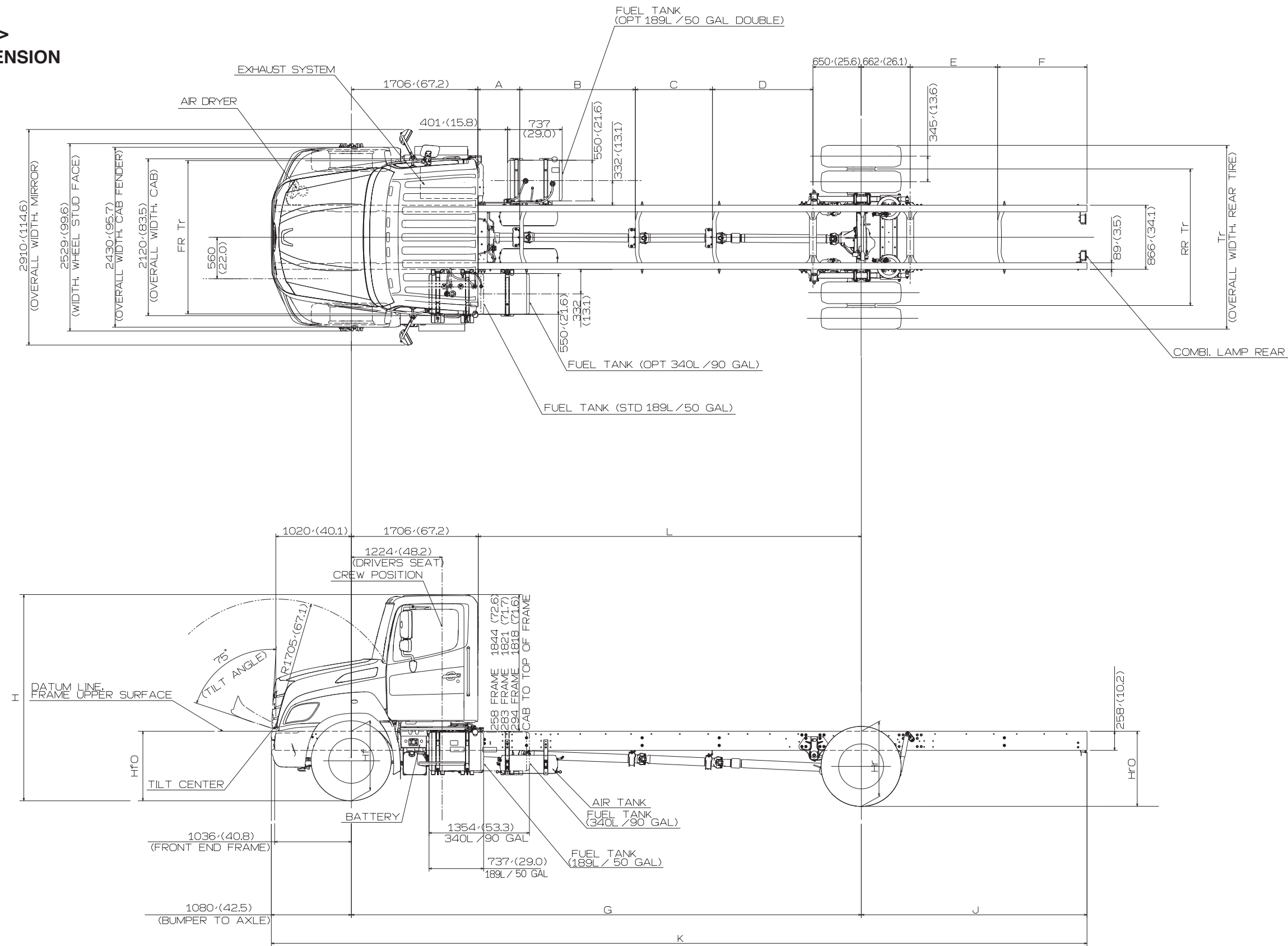
Unit : mm (in.)



3. CHASSIS DRAWINGS

Unit : mm (in.)

MODEL : NHC2 < Day Cab >
REAR AIR SUSPENSION



• **MODEL : NHC2 < Day Cab >**
REAR AIR SUSPENSION

DIMENSION OF CHASSIS

Unit : mm (in.)

Wheelbase		A	B	C	D	E	F	G	J	K	L
M	5207 (205)	711 (28)	930 (36.6)		1205 (47.4)	1346 (53.) 1181 (46.5)	623 (24.5)	5207 (205)	2007 (79) 2464 (97)	8293 (326.5) 8750 (344.5)	3500 (137.8)
P	5512 (217)	966 (38)	780 (30.7)		1405 (55.3)	1346 (53.) 1181 (46.5)	623 (24.5)	5512 (217)	2007 (79) 2464 (97)	8598 (338.5) 9055 (356.5)	3805 (149.8)
R	5969 (235)	1116 (43.9)	1110 (43.7)		1382 (54.4)	1346 (53.) 1181 (46.5)	623 (24.5)	5969 (235)	2007 (79) 2464 (97)	9055 (356.5) 9512 (374.5)	4262 (167.8)
T	6426 (253)	566 (22.3)	1500 (59.1)	770 (30.3)	1229 (48.4)	1346 (53.) 1181 (46.5)	623 (24.5)	6426 (253)	2007 (79) 2464 (97)	9512 (374.5) 9969 (392.5)	4719 (185.8)
V	6883 (271)	566 (22.3)	1560 (61.4)	1040 (40.9)	1356 (53.4)	1346 (53.) 1181 (46.5)	623 (24.5)	6883 (271)	2007 (79) 2464 (97)	9969 (392.5) 10426 (410.5)	5176 (203.8)
X	7341 (289)	711 (28)	1740 (68.5)	1145 (45.1)	1383 (54.4)	1346 (53.) 1181 (46.5)	623 (24.5)	7341 (289)	2007 (79) 2464 (97)	10426 (410.5) 10884 (428.5)	5633 (221.8)

• **MODEL : NHC2 < Day Cab >**
REAR AIR SUSPENSION

DIMENSION OF HEIGHT FROM GROUND

Unit : mm (in.)

FR AXLE	TIRE	WHEEL	WHEELBASE		GROUND HEIGHT FRAME UPPER SURFACE				H CAB	H Vert Stack	ROH
					HfO	Hf	Hr	HrO			
12000LBS	11R22.5	22.5X8.25	M	5207 (205)	891 (35.1)	903 (35.6)	968 (38.1)	999 (39.3)	2767 (108.9)	3726 (146.7)	2464 (97)
			P	5512 (217)	891 (35.1)	903 (35.6)	968 (38.1)	998 (39.3)	2766 (108.9)	3725 (146.7)	2464 (97)
			R	5969 (235)	892 (35.1)	903 (35.6)	968 (38.1)	1001 (39.4)	2765 (108.9)	3724 (146.6)	2464 (97)
			T	6426 (253)	893 (35.2)	903 (35.6)	968 (38.1)	994 (39.1)	2764 (108.8)	3722 (146.5)	2464 (97)
			V	6883 (271)	894 (35.2)	903 (35.6)	968 (38.1)	993 (39.1)	2763 (108.8)	3721 (146.5)	2464 (97)
			X	7341 (289)	919 (36.2)	928 (36.5)	993 (39.1)	1017 (40.)	2764 (108.8)	3722 (146.5)	2464 (97)
	FR 295/75R22.5 RR 295/75R22.5	22.5X8.25	M	5207 (205)	877 (34.5)	890 (35)	954 (37.6)	985 (38.8)	2754 (108.4)	3713 (146.2)	2464 (97)
			P	5512 (217)	878 (34.6)	890 (35)	954 (37.6)	984 (38.7)	2753 (108.4)	3712 (146.1)	2464 (97)
			R	5969 (235)	879 (34.6)	890 (35)	954 (37.6)	987 (38.9)	2751 (108.3)	3710 (146.1)	2464 (97)
			T	6426 (253)	880 (34.6)	890 (35)	954 (37.6)	980 (38.6)	2750 (108.3)	3709 (146)	2464 (97)
			V	6883 (271)	880 (34.6)	890 (35)	954 (37.6)	979 (38.5)	2749 (108.2)	3708 (146)	2464 (97)
			X	7341 (289)	906 (35.7)	915 (36)	979 (38.5)	1003 (39.5)	2750 (108.3)	3709 (146)	2464 (97)

• MODEL : NHC2 < Day Cab >
REAR AIR SUSPENSION

DIMENSION OF HEIGHT FROM GROUND

Unit : mm (in.)

FR AXLE	TIRE	WHEEL	WHEELBASE		GROUND HEIGHT FRAME UPPER SURFACE				H CAB	H Vert Stack	ROH
					HfO	Hf	Hr	HrO			
14600lbs	11R22.5	22.5X8.25	M	5207 (205)	879 (34.6)	894 (35.2)	971 (38.2)	1002 (39.4)	2761 (108.7)	3721 (146.5)	2464 (97)
			P	5512 (217)	880 (34.6)	894 (35.2)	971 (38.2)	1001 (39.4)	2760 (108.7)	3719 (146.4)	2464 (97)
			R	5969 (235)	881 (34.7)	894 (35.2)	971 (38.2)	1004 (39.5)	2758 (108.6)	3718 (146.4)	2464 (97)
			T	6426 (253)	907 (35.7)	919 (36.2)	996 (39.2)	1022 (40.2)	2759 (108.6)	3718 (146.4)	2464 (97)
			V	6883 (271)	907 (35.7)	919 (36.2)	996 (39.2)	1020 (40.2)	2758 (108.6)	3717 (146.3)	2464 (97)
			X	7341 (289)	908 (35.7)	919 (36.2)	996 (39.2)	1019 (40.1)	2757 (108.5)	3716 (146.3)	2464 (97)
	FR 295/75R22.5 RR 295/75R22.5	22.5X8.25	M	5207 (205)	868 (34.2)	882 (34.7)	954 (37.6)	988 (38.9)	2748 (108.2)	3707 (145.9)	2464 (97)
			P	5512 (217)	868 (34.2)	882 (34.7)	954 (37.6)	986 (38.8)	2747 (108.1)	3706 (145.9)	2464 (97)
			R	5969 (235)	869 (34.2)	882 (34.7)	954 (37.6)	990 (39)	2745 (108.1)	3704 (145.8)	2464 (97)
			T	6426 (253)	895 (35.2)	907 (35.7)	979 (38.5)	1007 (39.6)	2746 (108.1)	3705 (145.9)	2464 (97)
			V	6883 (271)	896 (35.3)	907 (35.7)	979 (38.5)	1006 (39.6)	2745 (108.1)	3704 (145.8)	2464 (97)
			X	7341 (289)	897 (35.3)	907 (35.7)	979 (38.5)	1005 (39.6)	2744 (108)	3702 (145.7)	2464 (97)
	12R22.5	22.5X9.00	M	5207 (205)	903 (35.6)	914 (36)	971 (38.2)	991 (39.)	2775 (109.3)	3734 (147)	2464 (97)
			P	5512 (217)	903 (35.6)	914 (36)	971 (38.2)	990 (39.)	2775 (109.3)	3733 (147)	2464 (97)
			R	5969 (235)	904 (35.6)	914 (36)	971 (38.2)	992 (39.1)	2773 (109.2)	3732 (146.9)	2464 (97)
			T	6426 (253)	930 (36.6)	939 (37)	996 (39.2)	1012 (39.8)	2774 (109.2)	3733 (147)	2464 (97)
			V	6883 (271)	930 (36.6)	939 (37)	996 (39.2)	1011 (39.8)	2773 (109.2)	3732 (146.9)	2464 (97)
			X	7341 (289)	931 (36.7)	939 (37)	996 (39.2)	1010 (39.8)	2773 (109.2)	3731 (146.9)	2464 (97)
	315/80R22.5	22.5X9.00	M	5207 (205)	911 (35.9)	920 (36.2)	968 (38.1)	992 (39.1)	2779 (109.4)	3738 (147.2)	2464 (97)
			P	5512 (217)	911 (35.9)	920 (36.2)	968 (38.1)	991 (39.)	2778 (109.4)	3737 (147.1)	2464 (97)
			R	5969 (235)	912 (35.9)	920 (36.2)	968 (38.1)	993 (39.1)	2777 (109.3)	3736 (147.1)	2464 (97)
			T	6426 (253)	937 (36.9)	945 (37.2)	993 (39.1)	1013 (39.9)	2778 (109.4)	3737 (147.1)	2464 (97)
			V	6883 (271)	938 (36.9)	945 (37.2)	993 (39.1)	1012 (39.8)	2778 (109.4)	3736 (147.1)	2464 (97)
			X	7341 (289)	938 (36.9)	945 (37.2)	993 (39.1)	1011 (39.8)	2777 (109.3)	3735 (147)	2464 (97)

• **MODEL : NHC2 < Day Cab >**
REAR AIR SUSPENSION

DIMENSION OF HEIGHT FROM GROUND

Unit : mm (in.)

FR AXLE	TIRE	WHEEL	WHEELBASE		GROUND HEIGHT FRAME UPPER SURFACE				H CAB	H Vert Stack	ROH
					HfO	Hf	Hr	HrO			
16000lbs	315/80R22.5	22.5X9.00	M	5207 (205)	918 (36.1)	926 (36.5)	968 (38.1)	991 (39.)	2784 (109.6)	3742 (147.3)	2464 (97)
			P	5512 (217)	944 (37.2)	951 (37.4)	993 (39.1)	1015 (40.)	2785 (109.6)	3743 (147.4)	2464 (97)
			T	6426 (253)	945 (37.2)	951 (37.4)	993 (39.1)	1013 (39.9)	2783 (109.6)	3741 (147.3)	2464 (97)

[NOTE]

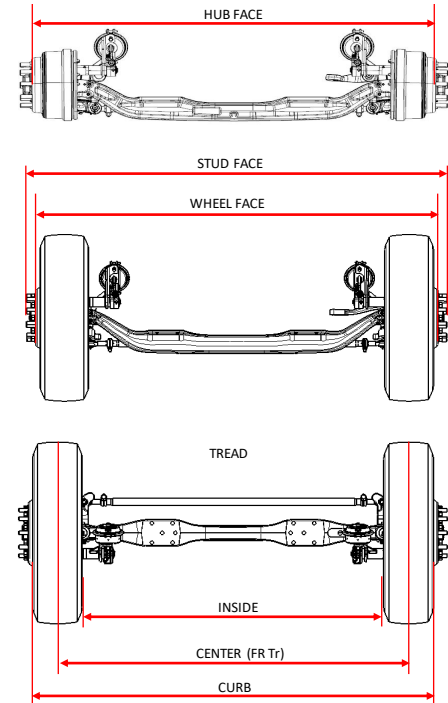
- FRAME HEIGHTS ARE BASED ON SMALLEST FRAME SECTION AVAILABLE FOR A GIVEN WHEELBASE AND GAWR.
- HEIGHTS BASED ON 11R22.5 REAR TIRES UNLESS SHOWN OTHERWISE.
- ADDITIONAL DIMENSIONS CAN BE PROVIDED WITH REQUEST TO SALES REP.

• MODEL : NHC2 < Day Cab >
REAR AIR SUSPENSION

Unit : mm (in.)

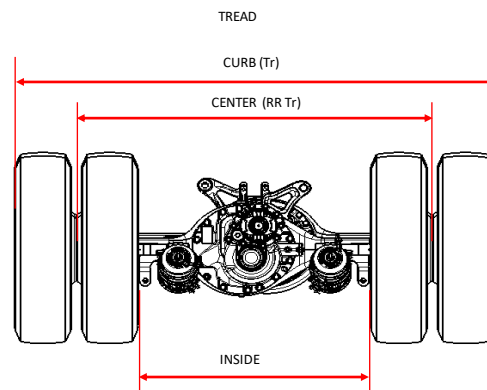
DIMENSION OF WIDTH : FRONT

MODEL	FR AXLE	TIRE	WHEEL	DISC	BRAKES	FR Tr	FR CURB	FR WHL	FR STUD
NHC2	12000LBS	11R22.5	22.5X8.25	ALUM	DRUM / DISC	2103 (82.8)	2382 (93.8)	2439 (96)	2532 (99.7)
				STEEL		2081 (81.9)	2360 (92.9)	2416 (95.1)	
		295/75R22.5		ALUM		2103 (82.8)	2394 (94.2)	2439 (96)	
				STEEL		2081 (81.9)	2372 (93.4)	2416 (95.1)	
	14600LBS	11R22.5	22.5X8.25	ALUM		2103 (82.8)	2382 (93.8)	2439 (96)	2532 (99.7)
				STEEL		2081 (81.9)	2360 (92.9)	2416 (95.1)	
		295/75R22.5		ALUM		2103 (82.8)	2394 (94.2)	2439 (96)	
				STEEL		2081 (81.9)	2372 (93.4)	2416 (95.1)	
		12R22.5	22.5X9.00	ALUM	2088 (82.2)	2388 (94)	2444 (96.2)		
				STEEL	2070 (81.5)	2370 (93.3)	2426 (95.5)		
				315/80R22.5	ALUM	2088 (82.2)	2400 (94.5)	2444 (96.2)	
					STEEL	2070 (81.5)	2382 (93.8)	2426 (95.5)	
	16000LBS	315/80R22.5	22.5X9.00	STEEL	DRUM	2070 (81.5)	2382 (93.8)	2362 (93)	2472 (97.3)
					DISC	2084 (82.1)	2396 (94.3)	2377 (93.6)	2481 (97.7)



DIMENSION OF WIDTH : REAR

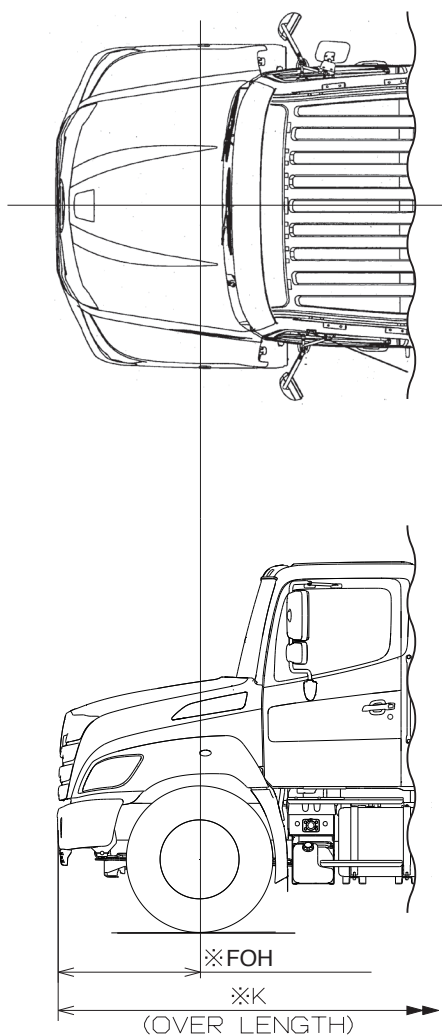
MODEL	RR AXLE	TIRE	WHEEL	DISC	BRAKES	RR Tr	Tr
NHC2	21000LBS / 23000LBS	11R22.5	22.5X8.25	ALUM	DRUM	1865 (73.4)	2480 (97.6)
				STEEL		1843 (72.6)	2457 (96.7)
		295/75R22.5		ALUM		1865 (73.4)	2491 (98.1)
				STEEL		1843 (72.6)	2469 (97.2)
		12R22.5	22.5X9.00	ALUM		1871 (72.9)	2526 (98.7)
				STEEL		1853 (72.9)	2508 (98.7)
		11R22.5	22.5X8.25	ALUM	DISC	1864 (73.4)	2478 (97.6)
				STEEL		1841 (72.5)	2456 (96.7)
		295/75R22.5		ALUM		1864 (73.4)	2489 (98)
				STEEL		1841 (72.5)	2467 (97.1)
		12R22.5	22.5X9.00	ALUM		1869 (73.6)	2525 (99.4)
				STEEL		1851 (72.9)	2507 (98.7)



NOTE: Additional dimensions can be provided with request to Sales Rep.

• **MODEL : NHC2 < Day Cab >**
REAR AIR SUSPENSION

OPTION BUMPER



DIMENSION OF CHASSIS

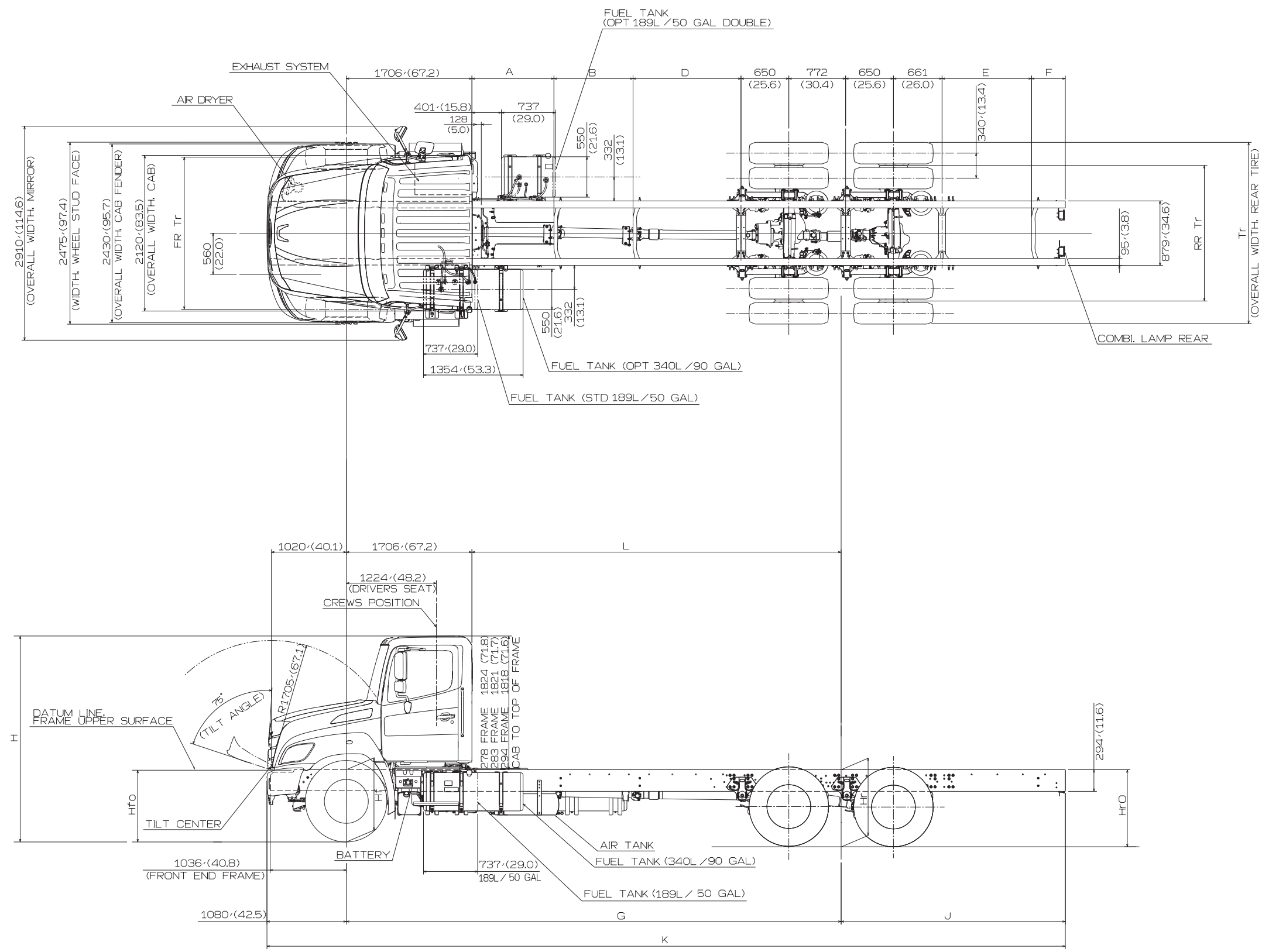
Unit : mm (in.)

Wheelbase		FOH	K
M	5207 (205)	1181	8394 (330.5)
		(46.5)	8852 (348.5)
P	5512 (217)	1181	8699 (342.5)
		(46.5)	9156 (360.5)
R	5969 (235)	1181	9156 (360.5)
		(46.5)	9614 (378.5)
T	6426 (253)	1181	9614 (378.5)
		(46.5)	10071 (396.5)
V	6883 (271)	1181	10071 (396.5)
		(46.5)	10528 (414.5)
X	7341 (289)	1181	10528 (414.5)
		(46.5)	10985 (432.5)

NOTE:1.FIGURES MARKED "※" ARE DIMENSIONS MEASURED
 IN PARALLEL WITH THE SURFACE OF THE GROUND.
 2.DIMENSIONS IN () ARE INCHES.

MODEL : NMC2 < Day Cab >
REAR AIR SUSPENSION

Unit : mm (in.)



• **MODEL : NMC2 < Day Cab >**
REAR AIR SUSPENSION

DIMENSION OF CHASSIS

Unit : mm (in.)

Wheelbase		A	B	D	E	F	G	J	K	L
K	4623 (182)	566 (22.3)		985 (38.8)	632 (24.9)	460 (18.1)	4623 (182)	2464 (97)	8166 (321.5)	2916 (114.8)
L	4928 (194)	566 (22.3)		1290 (50.8)	632 (24.9)	460 (18.1)	4928 (194)	2464 (97)	8471 (333.5)	3220 (126.8)
N	5436 (214)	966 (38)	810 (31.9)	588 (23.1)	632 (24.9)	460 (18.1)	5436 (214)	2464 (97)	8979 (353.5)	3728 (146.8)
R	5918 (233)	711 (28)	840 (33.1)	1296 (51)	632 (24.9)	460 (18.1)	5918 (233)	2464 (97)	9461 (372.5)	4211 (165.8)
U	6629 (261)	1116 (43.9)	1075 (42.3)	1367 (53.8)	632 (24.9)	460 (18.1)	6629 (261)	2464 (97)	10172 (400.5)	4922 (193.8)
U option	6731 (265)	1116 (43.9)	1075 (42.3)	1468 (57.8)	632 (24.9)	460 (18.1)	6731 (265)	2464 (97)	10274 (404.5)	5024 (197.8)
V	6985 (275)	1116 (43.9)	1290 (50.8)	1507 (59.3)	632 (24.9)	460 (18.1)	6985 (275)	2464 (97)	10528 (414.5)	5278 (207.8)
W	7137 (281)	1116 (43.9)	1440 (56.7)	1510 (59.4)	632 (24.9)	460 (18.1)	7137 (281)	2464 (97)	10680 (420.5)	5430 (213.8)

• **MODEL : NMC2 < Day Cab >**
REAR AIR 40K SUSPENSION

DIMENSION OF HEIGHT FROM GROUND

Unit : mm (in.)

GROUND HEIGHT FRAME UPPER SURFACE										H CAB	H Vert Stack	ROH
FR AXLE	TIRE	WHEEL	WHEELBASE		GROUND HEIGHT FRAME UPPER SURFACE				H CAB	H Vert Stack	ROH	
					HfO	Hf	Hr	HrO				
14600lbs	11R22.5	22.5X8.25	K	4623 (182)	899 (35.4)	914 (36)	983 (38.7)	1039 (40.9)	2761 (108.7)	3721 (146.5)	2464 (97)	
			L	4928 (194)	899 (35.4)	914 (36)	983 (38.7)	1036 (40.8)	2760 (108.7)	3719 (146.4)	2464 (97)	
			N	5436 (214)	901 (35.5)	914 (36)	983 (38.7)	1032 (40.6)	2758 (108.6)	3717 (146.3)	2464 (97)	
			R	5918 (233)	902 (35.5)	917 (36.1)	983 (38.7)	1030 (40.6)	2757 (108.5)	3715 (146.3)	2464 (97)	
			U	6629 (261)	908 (35.7)	919 (36.2)	988 (38.9)	1031 (40.6)	2757 (108.5)	3715 (146.3)	2464 (97)	
			U option	6731 (265)	908 (35.7)	919 (36.2)	988 (38.9)	1031 (40.6)	2756 (108.5)	3715 (146.3)	2464 (97)	
			V	6985 (275)	915 (36)	925 (36.4)	994 (39.1)	1039 (40.9)	2760 (108.7)	3719 (146.4)	2464 (97)	
			W	7137 (281)	915 (36)	925 (36.4)	994 (39.1)	1039 (40.9)	2760 (108.7)	3718 (146.4)	2464 (97)	
	FR 295/75R22.5 RR 295/75R22.5	22.5X8.25	K	4623 (182)	887 (34.9)	902 (35.5)	968 (38.1)	1023 (40.3)	2749 (108.2)	3708 (146)	2464 (97)	
			L	4928 (194)	888 (35)	902 (35.5)	968 (38.1)	1020 (40.2)	2747 (108.1)	3707 (145.9)	2464 (97)	
			N	5436 (214)	889 (35)	902 (35.5)	968 (38.1)	1017 (40)	2745 (108.1)	3704 (145.8)	2464 (97)	
			R	5918 (233)	890 (35)	902 (35.5)	968 (38.1)	1014 (39.9)	2744 (108)	3703 (145.8)	2464 (97)	
			U	6629 (261)	897 (35.3)	907 (35.7)	973 (38.3)	1016 (40)	2744 (108)	3703 (145.8)	2464 (97)	
			U option	6731 (265)	897 (35.3)	907 (35.7)	973 (38.3)	1015 (40)	2744 (108)	3703 (145.8)	2464 (97)	
			V	6985 (275)	904 (35.6)	913 (35.9)	979 (38.5)	1024 (40.3)	2748 (108.2)	3706 (145.9)	2464 (97)	
			W	7137 (281)	904 (35.6)	913 (35.9)	979 (38.5)	1024 (40.3)	2747 (108.1)	3706 (145.9)	2464 (97)	
	12R22.5	22.5X9.00	K	4623 (182)	923 (36.3)	934 (36.8)	983 (38.7)	1028 (40.5)	2775 (109.3)	3734 (147)	2464 (97)	
			L	4928 (194)	924 (36.4)	934 (36.8)	983 (38.7)	1026 (40.4)	2774 (109.2)	3733 (147)	2464 (97)	
			N	5436 (214)	925 (36.4)	934 (36.8)	983 (38.7)	1023 (40.3)	2773 (109.2)	3731 (146.9)	2464 (97)	
			R	5918 (233)	925 (36.4)	934 (36.8)	983 (38.7)	1021 (40.2)	2771 (109.1)	3730 (146.9)	2464 (97)	
			U	6629 (261)	931 (36.7)	939 (37)	988 (38.9)	1024 (40.3)	2772 (109.1)	3730 (146.9)	2464 (97)	
			U option	6731 (265)	931 (36.7)	939 (37)	988 (38.9)	1023 (40.3)	2772 (109.1)	3730 (146.9)	2464 (97)	
			V	6985 (275)	938 (36.9)	945 (37.2)	994 (39.1)	1032 (40.6)	2776 (109.3)	3734 (147)	2464 (97)	
			W	7137 (281)	938 (36.9)	945 (37.2)	994 (39.1)	1032 (40.6)	2776 (109.3)	3734 (147)	2464 (97)	
	FR 315/80R22.5 RR 295/75R22.5	FR 22.5X9.00 RR 22.5x8.25	K	4623 (182)	934 (36.8)	940 (37)	968 (38.1)	1003 (39.5)	2774 (109.2)	3732 (146.9)	2464 (97)	
			L	4928 (194)	934 (36.8)	940 (37)	968 (38.1)	1001 (39.4)	2774 (109.2)	3732 (146.9)	2464 (97)	
			N	5436 (214)	935 (36.8)	940 (37)	968 (38.1)	999 (39.3)	2773 (109.2)	3731 (146.9)	2464 (97)	
			R	5918 (233)	935 (36.8)	940 (37)	968 (38.1)	998 (39.3)	2772 (109.1)	3730 (146.9)	2464 (97)	
			U	6629 (261)	941 (37)	945 (37.2)	973 (38.3)	1001 (39.4)	2774 (109.2)	3731 (146.9)	2464 (97)	
			U option	6731 (265)	941 (37)	945 (37.2)	973 (38.3)	1001 (39.4)	2773 (109.2)	3731 (146.9)	2464 (97)	
			V	6985 (275)	947 (37.3)	951 (37.4)	979 (38.5)	1011 (39.8)	2778 (109.4)	3735 (147)	2464 (97)	
			W	7137 (281)	947 (37.3)	951 (37.4)	979 (38.5)	1010 (40)	2777 (109.3)	3735 (147)	2464 (97)	
16000lbs	315/80R22.5	22.5x9.00	K	4623 (182)	939 (37)	947 (37.3)	978 (38.5)	1017 (40)	2782 (109.5)	3740 (147.2)	2464 (97)	
			L	4928 (194)	940 (37)	947 (37.3)	978 (38.5)	1015 (40)	2781 (109.5)	3739 (147.2)	2464 (97)	
			N	5436 (214)	943 (37.1)	950 (37.4)	981 (38.6)	1016 (40)	2780 (109.4)	3738 (147.2)	2464 (97)	
			R	5918 (233)	944 (37.2)	950 (37.4)	981 (38.6)	1014 (39.9)	2780 (109.4)	3738 (147.2)	2464 (97)	

[NOTE]

• FRAME HEIGHTS ARE BASED ON SMALLEST FRAME SECTION AVAILABLE FOR A GIVEN WHEELBASE AND GAWR.

• HEIGHTS BASED ON 11R22.5 REAR TIRES UNLESS SHOWN OTHERWISE.

• ADDITIONAL DIMENSIONS CAN BE PROVIDED WITH REQUEST TO SALES REP.

• **MODEL : NMC2 < Day Cab >**
REAR AIR 46K SUSPENSION

DIMENSION OF HEIGHT FROM GROUND

Unit : mm (in.)

FR AXLE	TIRE	WHEEL	WHEELBASE		GROUND HEIGHT FRAME UPPER SURFACE				H CAB	H Vert Stack	ROH
					HfO	Hf	Hr	HrO			
14600lbs	11R22.5	22.5X8.25	K	4623 (182)	895 (35.2)	914 (36)	1000 (39.4)	1064 (41.9)	2767 (108.9)	3728 (146.8)	2464 (97)
			L	4928 (194)	896 (35.3)	914 (36)	1000 (39.4)	1061 (41.8)	2766 (108.9)	3726 (146.7)	2464 (97)
			N	5436 (214)	897 (35.3)	914 (36)	1000 (39.4)	1056 (41.6)	2763 (108.8)	3723 (146.6)	2464 (97)
			R	5918 (233)	899 (35.4)	914 (36)	1000 (39.4)	1053 (41.5)	2761 (108.7)	3721 (146.5)	2464 (97)
			U	6629 (261)	902 (35.5)	921 (36.3)	1007 (39.6)	1059 (41.7)	2761 (108.7)	3720 (146.5)	2464 (97)
			U option	6731 (265)	908 (35.7)	921 (36.3)	1007 (39.6)	1058 (41.7)	2760 (108.7)	3720 (146.5)	2464 (97)
	FR 295/75R22.5 RR 295/75R22.5	22.5X8.25	K	4623 (182)	883 (34.8)	902 (35.5)	987 (38.9)	1049 (41.3)	2755 (108.5)	3715 (146.3)	2464 (97)
			L	4928 (194)	884 (34.8)	902 (35.5)	987 (38.9)	1046 (41.2)	2753 (108.4)	3713 (146.2)	2464 (97)
			N	5436 (214)	886 (34.9)	902 (35.5)	987 (38.9)	1042 (41.)	2751 (108.3)	3710 (146.1)	2464 (97)
			R	5918 (233)	887 (34.9)	902 (35.5)	987 (38.9)	1038 (40.9)	2749 (108.2)	3708 (146)	2464 (97)
			U	6629 (261)	896 (35.3)	909 (35.8)	994 (39.1)	1045 (41.1)	2748 (108.2)	3708 (146)	2464 (97)
			U option	6731 (265)	896 (35.3)	909 (35.8)	994 (39.1)	1044 (41.1)	2748 (108.2)	3707 (145.9)	2464 (97)
	12R22.5	22.5X9.00	K	4623 (182)	919 (36.2)	934 (36.8)	1000 (39.4)	1053 (41.5)	2781 (109.5)	3740 (147.2)	2464 (97)
			L	4928 (194)	920 (36.2)	934 (36.8)	1000 (39.4)	1051 (41.4)	2779 (109.4)	3739 (147.2)	2464 (97)
			N	5436 (214)	921 (36.3)	934 (36.8)	1000 (39.4)	1047 (41.2)	2778 (109.4)	3737 (147.1)	2464 (97)
			R	5918 (233)	922 (36.3)	934 (36.8)	1000 (39.4)	1044 (41.1)	2776 (109.3)	3735 (147)	2464 (97)
			U	6629 (261)	931 (36.7)	941 (37)	1007 (39.6)	1052 (41.4)	2776 (109.3)	3735 (147)	2464 (97)
			U option	6731 (265)	931 (36.7)	941 (37)	1007 (39.6)	1051 (41.4)	2776 (109.3)	3735 (147)	2464 (97)
	FR 315/80R22.5 RR 295/75R22.5	FR 22.5X9.00 RR 22.5x8.25	K	4623 (182)	930 (36.6)	940 (37)	987 (38.9)	1029 (40.5)	2781 (109.5)	3739 (147.2)	2464 (97)
			L	4928 (194)	930 (36.6)	940 (37)	987 (38.9)	1027 (40.4)	2780 (109.4)	3738 (147.2)	2464 (97)
			N	5436 (214)	931 (36.7)	940 (37)	987 (38.9)	1024 (40.3)	2778 (109.4)	3737 (147.1)	2464 (97)
			R	5918 (233)	932 (36.7)	940 (37)	987 (38.9)	1022 (40.2)	2777 (109.3)	3735 (147)	2464 (97)
			U	6629 (261)	940 (37)	947 (37.3)	994 (39.1)	1030 (40.6)	2778 (109.4)	3736 (147.1)	2464 (97)
			U option	6731 (265)	940 (37)	947 (37.3)	994 (39.1)	1030 (40.6)	2778 (109.4)	3736 (147.1)	2464 (97)
16000lbs	315/80R22.5	22.5x9.00	K	4623 (182)	935 (36.8)	947 (37.3)	1000 (39.4)	1048 (41.3)	2789 (109.8)	3748 (147.6)	2464 (97)
			L	4928 (194)	935 (36.8)	947 (37.3)	1000 (39.4)	1046 (41.2)	2788 (109.8)	3747 (147.5)	2464 (97)
			N	5436 (214)	939 (37)	950 (37.4)	1003 (39.5)	1046 (41.2)	2787 (109.7)	3745 (147.4)	2464 (97)
			R	5918 (233)	942 (37.1)	952 (37.5)	1005 (39.6)	1049 (41.3)	2785 (109.6)	3744 (147.4)	2464 (97)

[NOTE]

• FRAME HEIGHTS ARE BASED ON SMALLEST FRAME SECTION AVAILABLE FOR A GIVEN WHEELBASE AND GAWR.

• HEIGHTS BASED ON 11R22.5 REAR TIRES UNLESS SHOWN OTHERWISE.

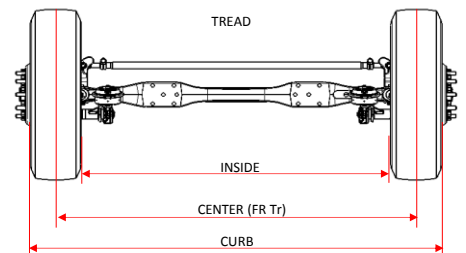
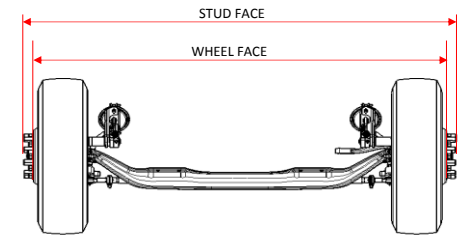
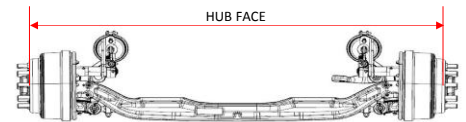
• ADDITIONAL DIMENSIONS CAN BE PROVIDED WITH REQUEST TO SALES REP.

• **MODEL : NMC2 < Day Cab >**
REAR AIR SUSPENSION

Unit : mm (in.)

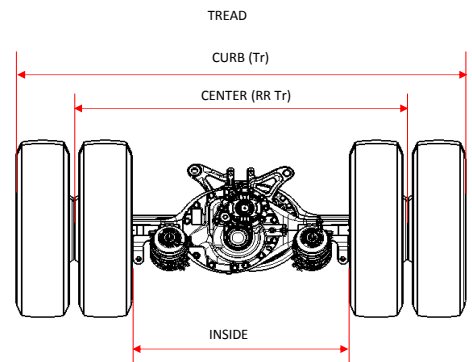
DIMENSION OF WIDTH : FRONT

MODEL	FR AXLE	TIRE	WHEEL	DISC	BRAKES	FR Tr	FR CURB	FR WHL	FR STUD
NMC2	14600LBS	11R22.5	22.5X8.25	ALUM	DRUM / DISC	2103 (82.8)	2382 (93.8)	2439 (96)	2532 (99.7)
				STEEL		2081 (81.9)	2360 (92.9)	2416 (95.1)	
		295/75R22.5		ALUM		2103 (82.8)	2394 (94.3)	2439 (96)	
				STEEL		2081 (81.9)	2372 (93.4)	2416 (95.1)	
		12R22.5	22.5X9.00	ALUM		2088 (82.2)	2388 (94)	2444 (96.2)	
				STEEL		2070 (81.5)	2370 (93.3)	2426 (95.5)	
		315/80R22.5		ALUM		2088 (82.2)	2400 (94.5)	2444 (96.2)	
				STEEL		2070 (81.5)	2382 (93.8)	2426 (95.5)	
	16000LBS	315/80R22.5	22.5X9.00	STEEL	DRUM	2070 (81.5)	2382 (93.8)	2362 (93)	2472 (97.3)
					DISC	2084 (82)	2396 (94.3)	2377 (93.6)	2481 (97.7)



DIMENSION OF WIDTH : REAR

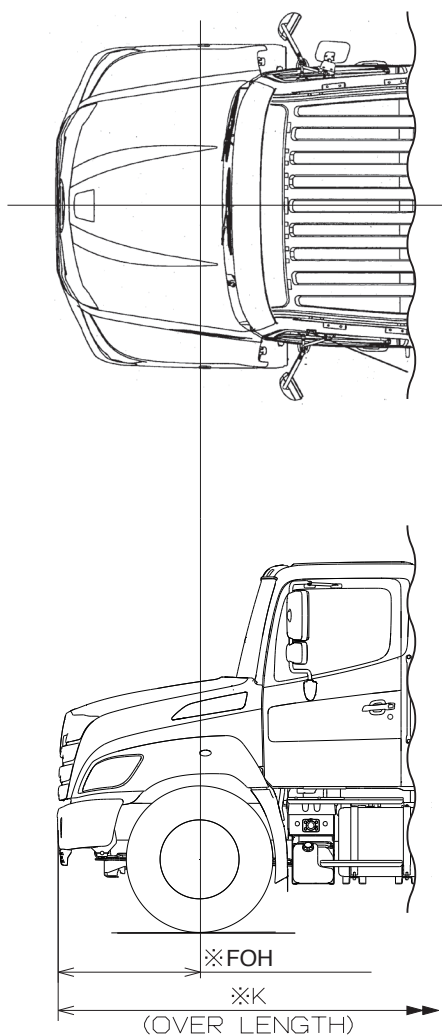
MODEL	RR AXLE	TIRE	WHEEL	DISC	BRAKES	RR Tr	Tr
NMC2	40000LBS / 46000LBS	11R22.5	22.5X8.25	ALUM	DRUM	1865 (73.4)	2480 (97.6)
				STEEL		1843 (72.6)	2457 (96.7)
		295/75R22.5		ALUM		1865 (73.4)	2491 (98.1)
				STEEL		1843 (72.6)	2469 (97.2)
		12R22.5	22.5X9.00	ALUM		1871 (73.7)	2526 (99.4)
				STEEL		1853 (73)	2508 (98.7)
		315/80R22.5		ALUM		1871 (73.7)	2538 (99.9)
				STEEL		1853 (73)	2520 (99.2)
		455/55R22.5	22.5X14.00	STEEL		1853 (73)	2305 (90.7)
		11R22.5	22.5X8.25	ALUM	DISC	1864 (73.4)	2478 (97.6)
				STEEL		1841 (72.5)	2456 (96.7)
		295/75R22.5		ALUM		1864 (73.4)	2489 (98)
				STEEL		1841 (72.5)	2467 (97.1)
		12R22.5	22.5X9.00	ALUM		1869 (73.6)	2525 (99.4)
				STEEL		1851 (72.9)	2507 (98.7)
		315/80R22.5		ALUM		1869 (73.6)	2537 (99.9)
				STEEL		1851 (72.9)	2519 (99.2)
		455/55R22.5	22.5X14.00	STEEL		1851 (72.9)	2303 (90.7)



NOTE: Additional dimensions can be provided with request to Sales Rep.

• **MODEL : NMC2 < Day Cab >**
REAR AIR SUSPENSION

OPTION BUMPER



DIMENSION OF CHASSIS

Unit : mm (in.)

Wheelbase		FOH	K
K	4623 (182)	1181 (46.5)	8267 (325.5)
L	4928 (194)	1181 (46.5)	8572 (337.5)
N	5436 (214)	1181 (46.5)	9080 (357.5)
R	5918 (233)	1181 (46.5)	9563 (376.5)
U	6629 (261)	1181 (46.5)	10274 (404.5)
U option	6731 (265)	1181 (46.5)	10376 (408.5)
V	6985 (275)	1181 (46.5)	10630 (418.5)
W	7137 (281)	1181 (46.5)	10782 (424.5)

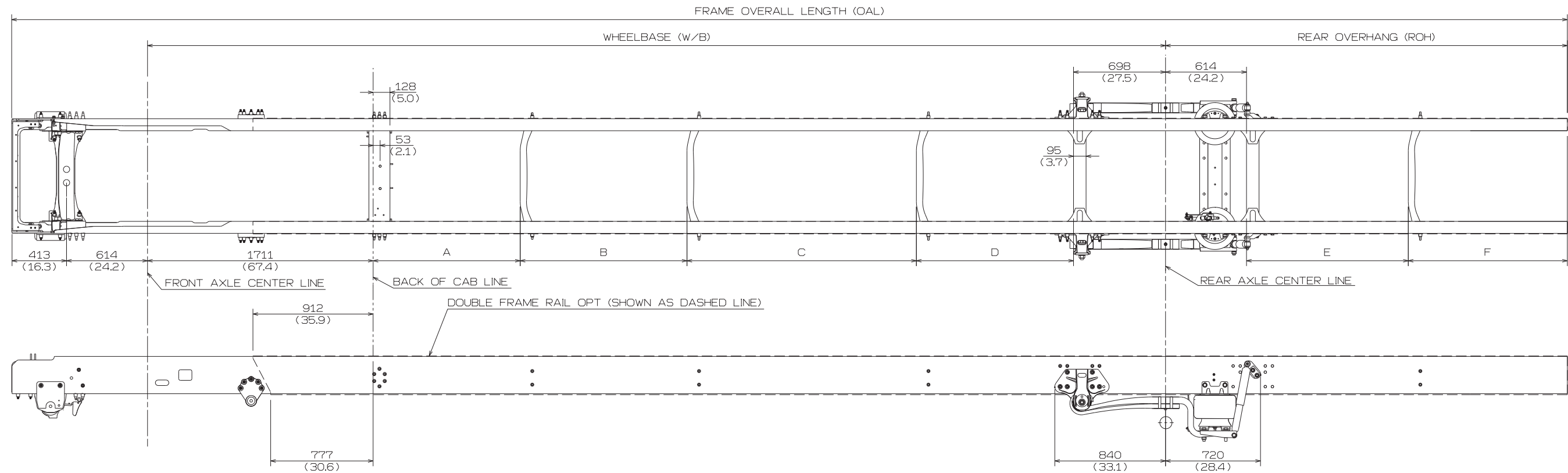
NOTE:1.FIGURES MARKED "※" ARE DIMENSIONS MEASURED
 IN PARALLEL WITH THE SURFACE OF THE GROUND.
 2.DIMENSIONS IN () ARE INCHES.

4. CHASSIS FRAME DRAWINGS

Unit : mm (in.)

MODEL : NHC2 < Day Cab >
REAR AIR SUSPENSION

1) DETAIL OF CHASSIS FRAME



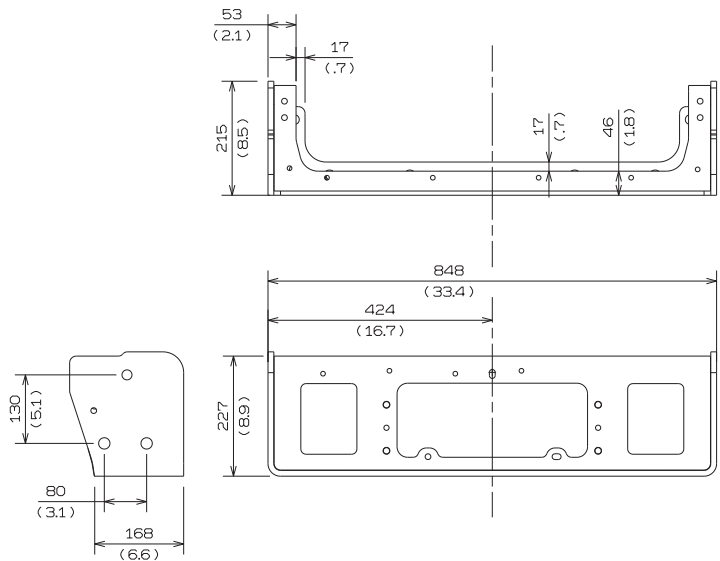
DIMENSION OF CHASSIS

Unit : mm (in.)

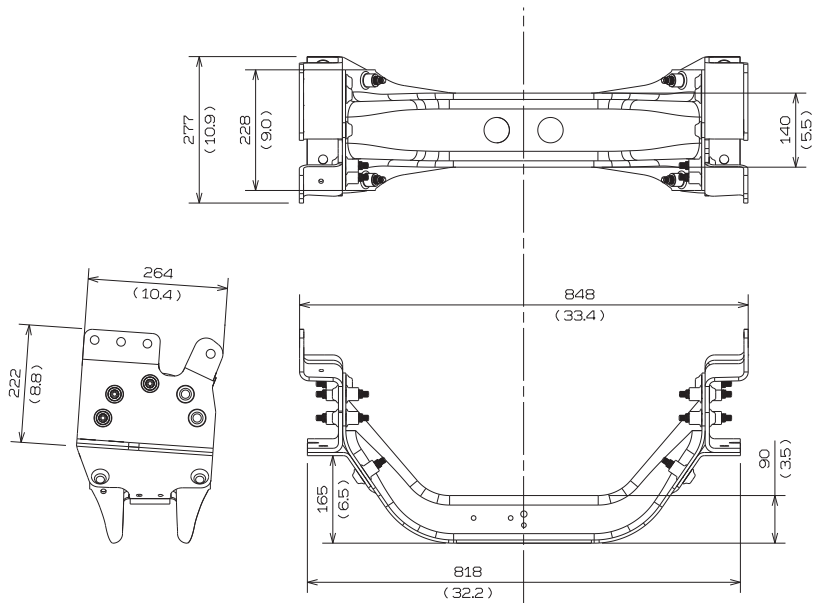
Wheelbase		A	B	C	D	E	F	ROH	OAL
M	5207	711	930		1157	1346 (53.)	623 (24.5)	2007 (79)	8244 (324.6)
	(205)	(28)	(36.6)		(45.6)	1181 (46.5)		2464 (97)	8701 (342.6)
P	5512	966	780		1357	1346 (53.)	623 (24.5)	2007 (79)	8548 (336.5)
	(217)	(38)	(30.7)		(53.4)	1181 (46.5)		2464 (97)	9006 (354.6)
R	5969	1116	1110		1334	1346 (53.)	623 (24.5)	2007 (79)	9006 (354.6)
	(235)	(43.9)	(43.7)		(52.5)	1181 (46.5)		2464 (97)	9463 (372.6)
T	6426	566	1500	770	1181	1346 (53.)	623 (24.5)	2007 (79)	9463 (372.6)
	(253)	(22.3)	(59.1)	(30.3)	(46.5)	1181 (46.5)		2464 (97)	9920 (390.6)
V	6883	566	1560	1040	1308	1346 (53.)	623 (24.5)	2007 (79)	9920 (390.6)
	(271)	(22.3)	(61.4)	(40.9)	(51.5)	1181 (46.5)		2464 (97)	10377 (408.5)
X	7341	711	1740	1145	1335	1346 (53.)	623 (24.5)	2007 (79)	10377 (408.5)
	(289)	(28)	(68.5)	(45.1)	(52.6)	1181 (46.5)		2464 (97)	10834 (426.5)

2) DETAIL OF CROSSMEMBER

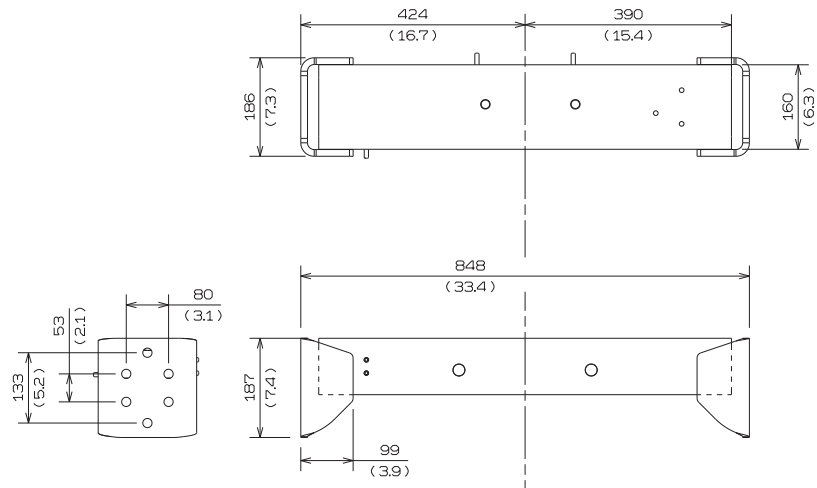
Unit : mm (in.)



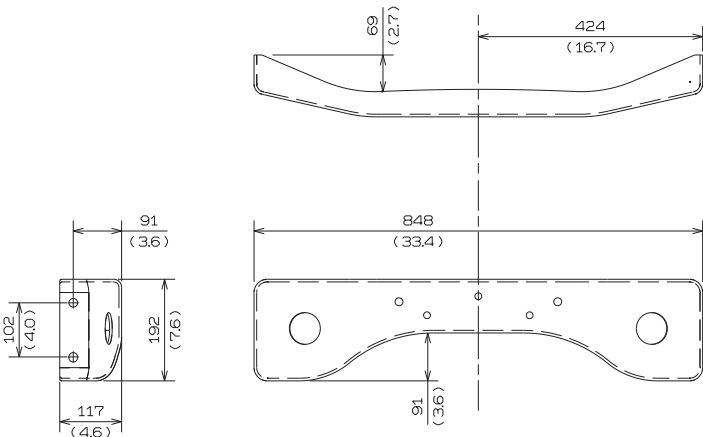
NO.1 CROSSMEMBER



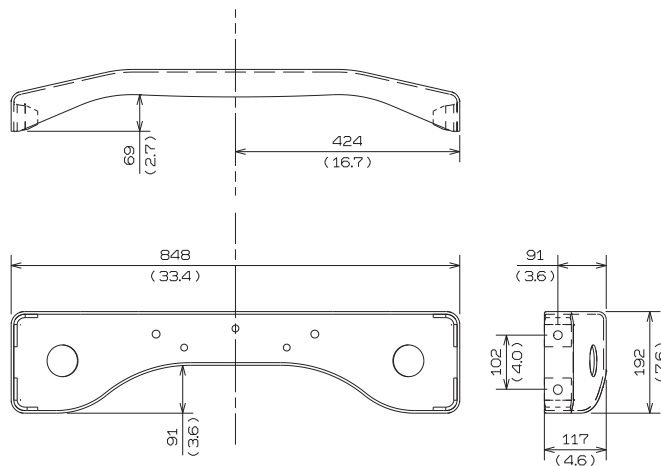
NO.2 CROSSMEMBER



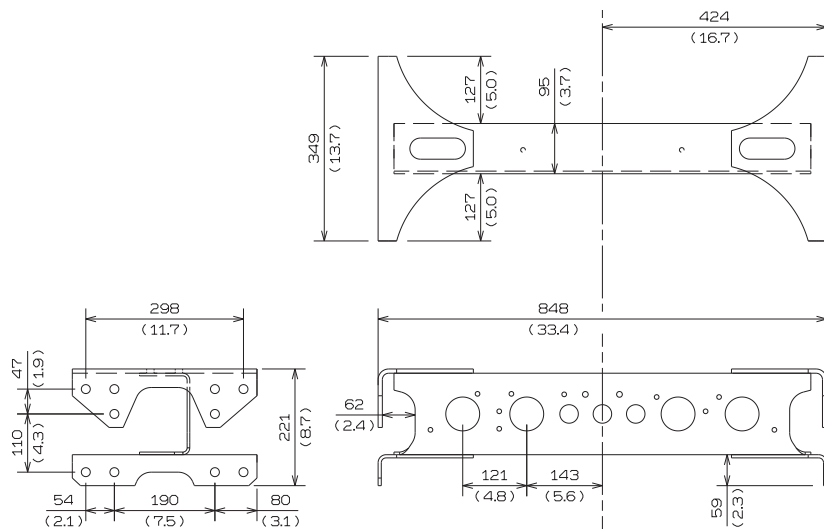
NO.3 CROSSMEMBER



DOGBONE STYLE CROSSMEMBER
(NON-REINFORCED)



DOGBONE STYLE CROSSMEMBER
(REINFORCED)

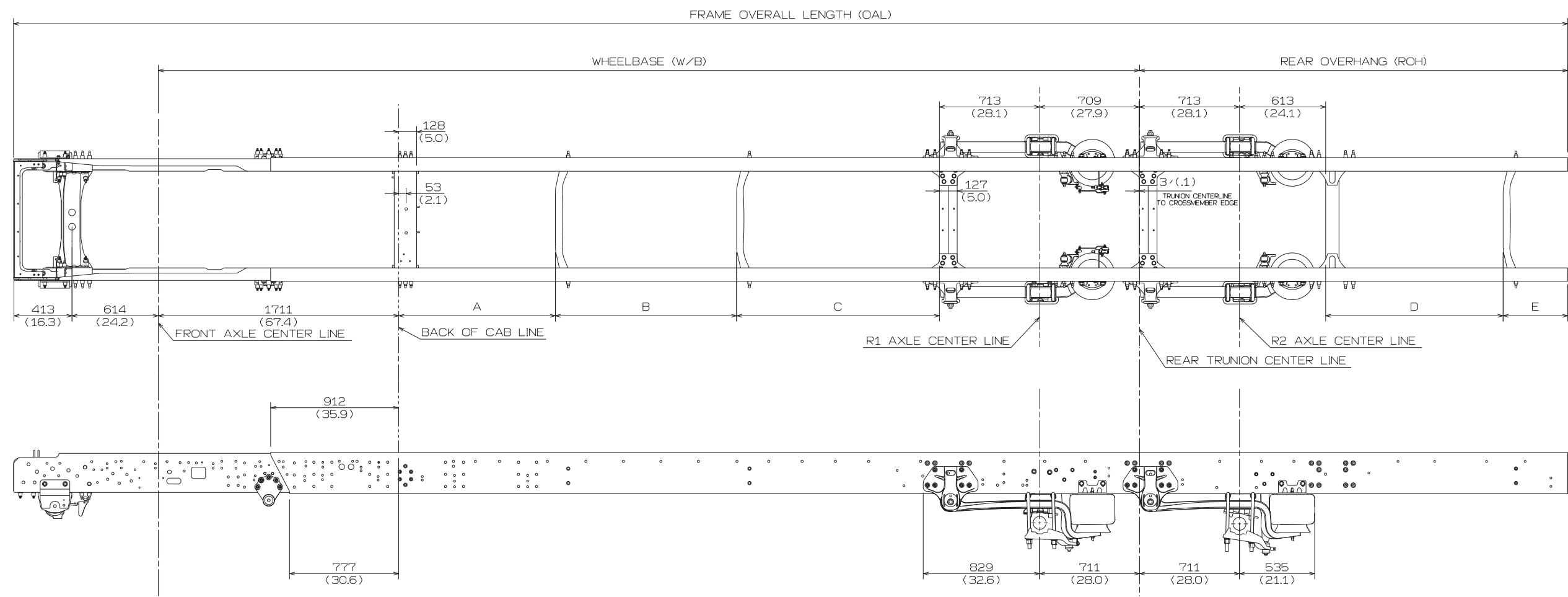


WELDED STYLE CROSSMEMBER

MODEL : NMC2 < Day Cab >
REAR AIR SUSPENSION

Unit : mm (in.)

1) DETAIL OF CHASSIS FRAME



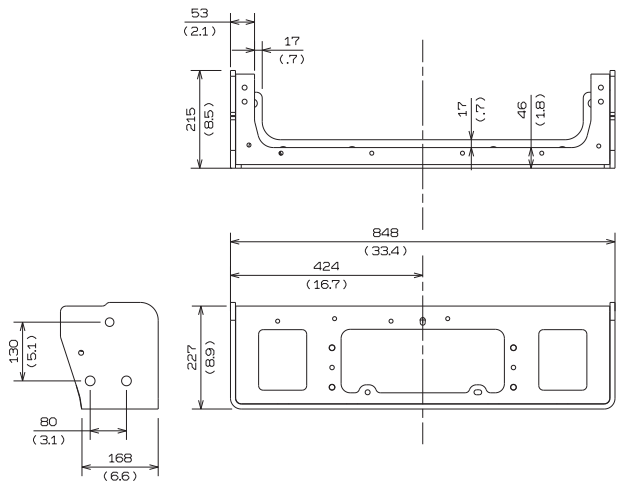
DIMENSION OF CHASSIS

Unit : mm (in.)

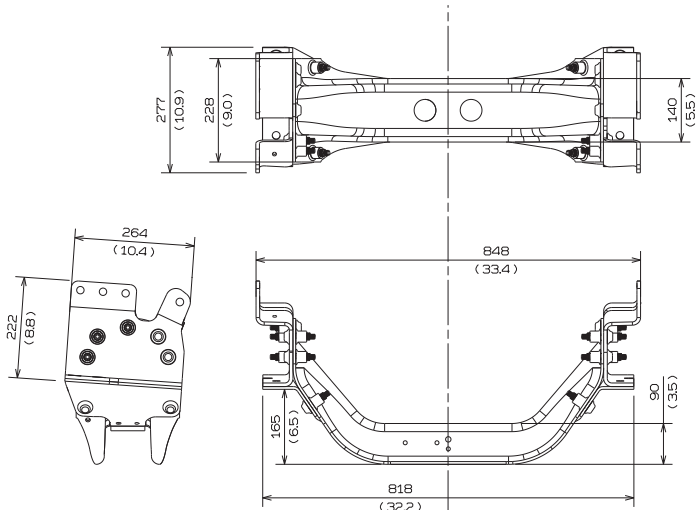
Wheelbase		A	B	C	D	E	ROH	OAL
K	4623 (182)	566 (22.3)	922 (36.3)		632 (24.9)	460 (18.1)	2464 (97)	8117 (320)
L	4928 (194)	566 (22.3)	1227 (48.3)		632 (24.9)	460 (18.1)	2464 (97)	8421 (332)
N	5436 (214)	966 (38)	810 (31.9)	525 (20.7)	632 (24.9)	460 (18.1)	2464 (97)	8929 (352)
R	5918 (233)	711 (28)	840 (33.1)	1232 (48.5)	632 (24.9)	460 (18.1)	2464 (97)	9412 (371)
U	6629 (261)	1116 (43.9)	1075 (42.3)	1304 (51.3)	632 (24.9)	460 (18.1)	2464 (97)	10123 (399)
U option	6731 (265)	1116 (43.9)	1075 (42.3)	1405 (55.3)	632 (24.9)	460 (18.1)	2464 (97)	10225 (403)
V	6985 (275)	1116 (43.9)	1290 (50.8)	1443 (56.8)	632 (24.9)	460 (18.1)	2464 (97)	10479 (413)
W	7137 (281)	1116 (43.9)	1440 (56.7)	1447 (57)	632 (24.9)	460 (18.1)	2464 (97)	10631 (419)

2) DETAIL OF CROSSMEMBER

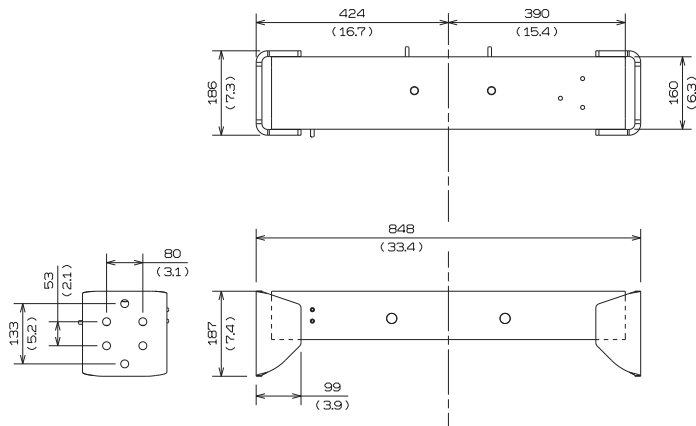
Unit : mm (in.)



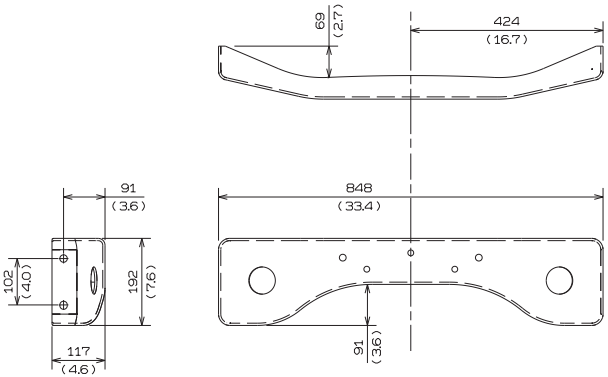
NO.1 CROSSMEMBER



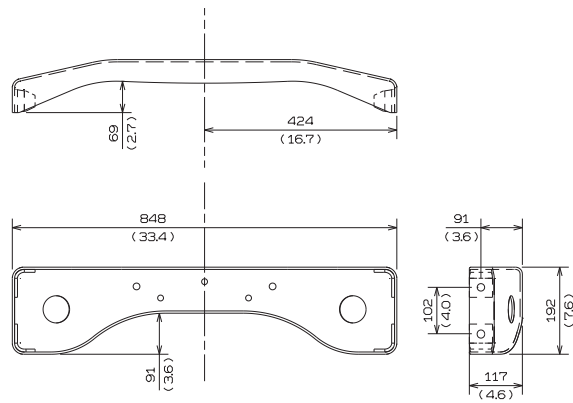
NO.2 CROSSMEMBER



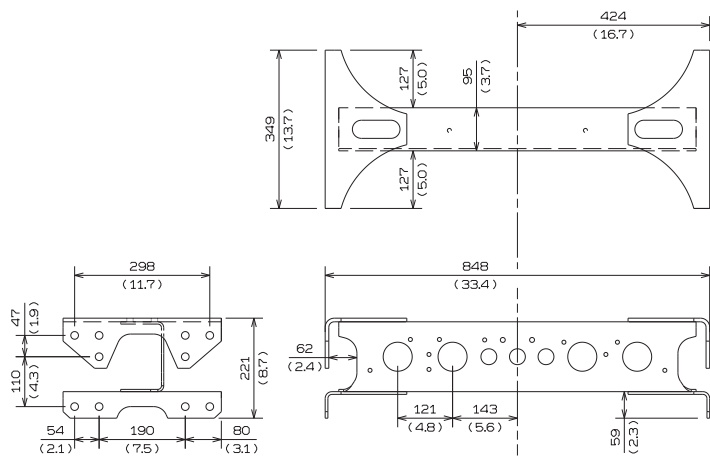
NO.3 CROSSMEMBER



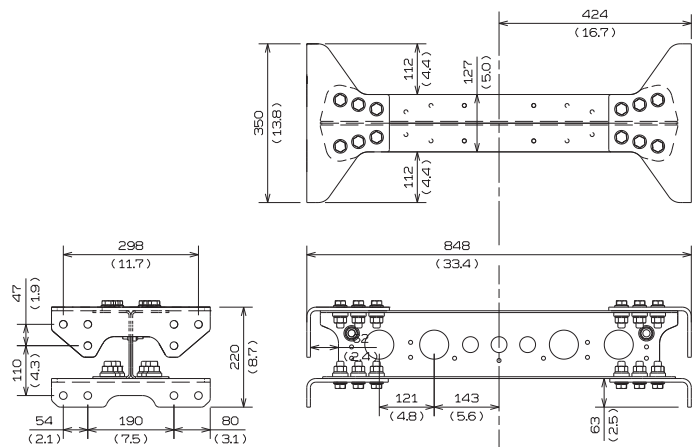
DOGBONE STYLE CROSSMEMBER
(NON-REINFORCED)



DOGBONE STYLE CROSSMEMBER
(REINFORCED)



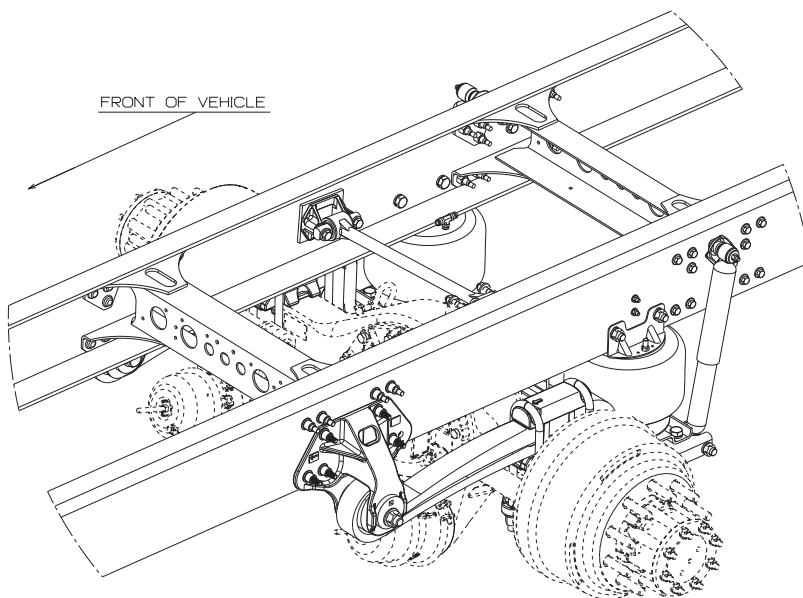
WELDED STYLE CROSSMEMBER



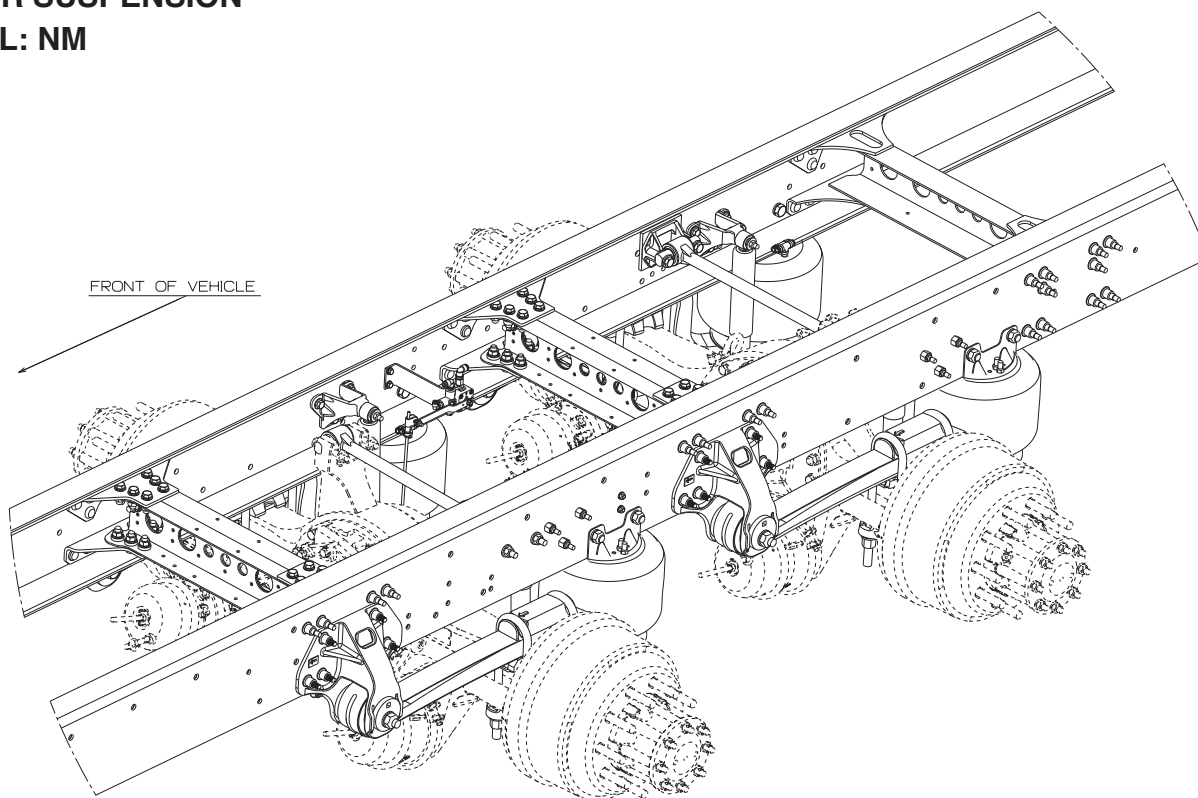
BOLTED STYLE CROSSMEMBER

5. REFERENCE FIGURE FOR SUSPENSION

AIR SUSPENSION MODEL: NH



40K AIR SUSPENSION MODEL: NM



**46K AIR SUSPENSION
MODEL: NM**

